



# *"Tri-County Hospitality"*

---

## **MAYOR AND BOARD OF COMMISSIONERS**

MAYOR RANDY WEAVER

MAURICE GARRETT

RAYMOND MOORE    RANDALL COLLIE    LINDA VIRGIL

WILBUR ETHERIDGE

## **ADMINISTRATION**

JOEY T. PETWAY, CHIEF OF POLICE/INTERIM TOWN MANAGER

TRACY SULLIVAN, TOWN CLERK

BRIAN PRIDGEN, TOWN ATTORNEY

LENESSA HAWKINS, FINANCE OFFICER

ROBERT SMITH, UTILITY DIRECTOR

**December 2, 2014**

**6:30PM**



## **AGENDA**

---

### **I. CALL TO ORDER**

### **II. INVOCATION**

### **III. PLEDGE OF ALLEGIANCE**

Mayor Randy Weaver will lead the Commissioners and those in attendance in reciting the Pledge of Allegiance to the Flag.

“I pledge allegiance to the Flag of the United States of America, and to the Republic for which it stands, one nation under God, indivisible, with liberty and justice for all.”

### **IV. ROLL CALL**

### **V. RECOGNITION**

### **VI. PRESENTATIONS**

Kevin O’Donnell – Nova Energy Consultants

Mike Stanley – Flowers and Stanley, LLP

### **VII. PETITIONS AND COMMUNICATIONS**

If any citizen wishes to address the Town of Sharpsburg Board of Commissioners during the Petitions and Communications segment of the meeting, they may do so by signing up prior to the beginning of the meeting.

The Town Clerk shall provide the sign-up sheet, which lists the name and address. It should be noted that comments shall be limited to three (3) minutes and Board reserves the right not to act on requests first presented this evening.

### **VIII. CONSENT AGENDA & REGULAR AGENDA**

The Board may by majority vote add items to or subtract items from both the proposed consent and regular agenda. As of this writing, the manager understands that the presented consent agenda items are routine and therefore concurs with adopting the presented consent agenda.



1. Approval of:
  - a. November 6, 2014 Regular Meeting Minutes

## **IX. NEW BUSINESS**

- a. Consideration by the Board to rescind the motions made during the October 21, 2014 meeting concerning the purchase of a pole truck.
- b. Board discussion on utility bill extensions and penalties.
- c. Board discussion on vandalism occurring in Town.

## **X. TOWN MANAGER & DEPARTMENTAL REPORTS**

## **XI. CLOSED SESSION**

Closed session pursuant to N.C.G.S. 143-318.11 (a) (6) to discuss personnel issues.

## **XII. ADJOURNMENT**

**SPECIAL NOTICE:** Anyone who needs an interpreter or special accommodations to participate in the meeting should notify the Town Clerk, Tracy Sullivan at 252-446-9441 ext.221 at least forty-eight (48) hours prior to the meeting. (Americans with Disabilities Act (ADA) 1991.)

“The Town of Sharpsburg is an equal opportunity provider and employer.”

To file a complaint of discrimination, write to: USDA, Assistant Secretary for Civil Rights, Office of the Assistant Secretary for Civil Rights

1400 Independence Avenue, S.W. Stop 9410, Washington, DC 20250-9410 or call (800)795-3272 (voice) or (202)720-6382.



## **MINUTES OF THE REGULAR MEETING OF THE SHARPSBURG BOARD OF COMMISSIONERS**

**November 6, 2014**

**6:30 PM**

---

Mayor Weaver called the meeting to order. Commissioner Garrett offered invocation. Mayor Weaver led the Pledge of Allegiance. Tracy Sullivan, Town Clerk called the roll.

### **BOARD MEMBERS PRESENT**

Mayor Randy Weaver, Mayor Pro-Tem Garrett, Commissioner Moore, Commissioner Etheridge, Commissioner Collie and Commissioner Virgil. Interim Town Manager, Joey Petway and Brian Pridgen, Town Attorney were also present.

### **CITIZEN PETITIONS AND COMPLAINTS**

Joseph Strachan – Mr. Strachan requested that the Town repair the drainage ditch that flows through his property at 711 Queen Street. He stated that the Town performed work on the ditch which worsened the erosion of the ditch.

The Board instructed Robert Smith to evaluate the ditch and return with proposals to correct the erosion issue. The Board also informed Mr. Strachan that if the Town performed any maintenance on the ditch there would be an easement in place.

### **APPROVAL OF THE CONSENT & REGULAR AGENDA**

Commissioner Garrett made the motion to approve the Consent Agenda and Regular Agenda. Commissioner Virgil seconded the motion. The motion carried. The Consent Agenda items were as follows:

October 7, 2014 Regular Meeting Minutes

October 21, 2014 Special Called Meeting Minutes

### **UNFINISHED BUSINESS**

Commissioner Etheridge made a motion to authorize Mayor Weaver to execute the Contract agreement for the Water System Study. Commissioner Collie seconded the motion. The motion carried.

**NEW BUSINESS**

Commissioner Virgil made a motion to accept the Software Contract with Edmunds & Associates. Commissioner Garrett seconded the motion. The motion carried.

Commissioner Garrett made a motion to approve the Resolution Amending the Town of Sharpsburg Personnel Policy to authorize Comp Time for Administrative Personnel. Commissioner Etheridge seconded the motion. The motion carried.

Commissioner Garrett made a motion to adopt an Ordinance Prohibiting the Use or Installation of Private Water Wells Except Under Specific Circumstances. Commissioner Etheridge seconded the motion. The motion carried.

Commissioner Garrett made a motion to approve the donation of 4 Microsoft 7 Pro software to the GED program at a cost of \$556.00. Commissioner Virgil seconded the motion. The motion carried.

Commissioner Etheridge made a motion to increase the Parks and Recreation, Christmas Committee budget by \$2,000.00 for a total appropriation after the amendment to be \$4,000.00. Commissioner Virgil seconded the motion. The motion carried.

Commissioner Collie had an emergency and left before the closed session.

**CLOSED SESSION**

Commissioner Virgil made a motion to go into closed session pursuant to N.C.G.S. 143-318 (a) (4) & (6) to discuss economic development and personnel matters. Commissioner Etheridge seconded the motion. The motion carried.

**OPEN SESSION**

Commissioner Etheridge made a motion to re-enter open session. Commissioner Garrett seconded the motion. The motion carried.

Commissioner Garrett made a motion to call a special meeting for a closed session personnel matter on December 9<sup>th</sup> at 9:00 a.m. Commissioner Virgil seconded the motion. The motion carried.

**ADJOURNMENT**

Commissioner Etheridge made a motion to adjourn. Commissioner Virgil seconded the motion. The motion carried.

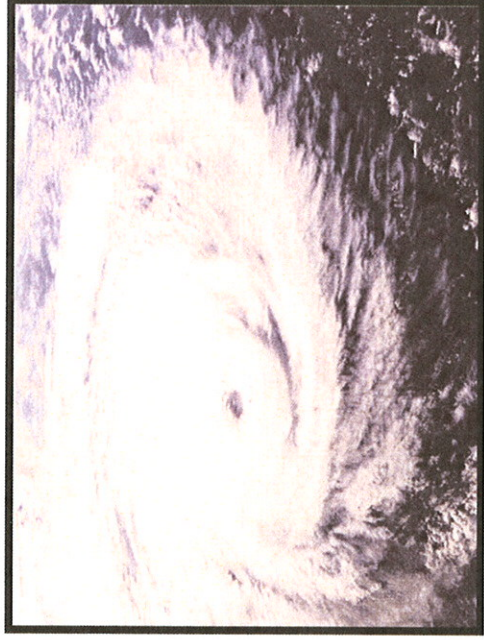
\_\_\_\_\_  
Date Approved

\_\_\_\_\_  
Mayor

\_\_\_\_\_  
Town Clerk

# **Regional Multi-Jurisdictional Hazard Mitigation Plan (Nash-Edgecombe-Wilson Counties)**

**Public Input Meeting:  
November 20, 2014  
Sharpsburg Town Hall**



P. O. Box 9 • Wilson, NC 27894  
252.234.5952 (Tel) 252.234.5971 (Fax)

# **Outline for the Nash-Edgecombe- Wilson County MJ Haz Mit Plan**

- **Section I: Introduction to Hazard Mitigation Planning**
- **Section II: Description of the Nash-Edgecombe-Wilson County Area**
  - Location & Topography
  - Climate
  - Surface Waters
  - Population
- **Section III: Planning Process**
  - Description of the Process
  - Participants in the Process
  - Public Involvement
- **Section IV: Assessment of Community Capabilities**
  - Administrative & Technical
  - Education & Outreach
  - Financial
  - Planning & Regulatory

# HM Plan Outline continued

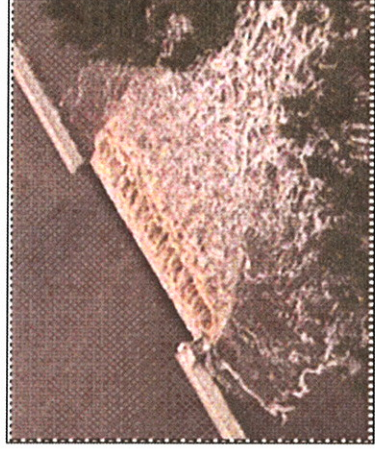
- **Section V: Risk Assessment**
  - Hazard Identification
  - Identification of Community Assets (ex. Critical Facilities)
  - Analyze and Summarize Risks & Vulnerabilities
- **Section VI: Mitigation Strategies**
  - Overall Goals
  - Local Government Actions
  - Implementation
- **Section VII: Plan Maintenance**
- **Appendices:**
  - Adoption Resolutions
  - Definitions



# Risk Assessment

- Hazard Identification
  1. Review of Current (2010) County HM Plans
  2. Review of NC Hazard Mitigation Plan
  3. Omission of Very Low/Non-Applicable Risk Hazards
    - Volcanoes
    - Tsunami
    - Coastal Erosion
    - Storm surges from Hurricanes/Nor'easters
    - Rip currents
    - Waterspouts
    - Debris Flow/Landslides (Avalanches)
    - Mine Collapse

# Local Hazards in Draft Plan



- **Dam/Levee Failures**
- **Drought/Heat Waves**
- **Earthquakes**
- **Floods**
- **Fog**
- **Geological (acidic soil, subsidence, sinkholes, expansive soil, & geochemical: arsenic, radon, etc)**
- **Hurricanes and Extratropical Storms (Nor'easters)**
- **Severe Winter Weather (freezing rain, sleet, snow, extreme cold, strong wind)**
- **Thunderstorms (including hail, lightning, & strong wind)**
- **Tornadoes**
- **Wildfires/Forest Fires**

# Critical Facilities

**Definition:** Structures, systems and institutions that are necessary for a community's response to and recovery from major natural disasters are considered critical facilities. Critical facilities are essential to the health, safety, and welfare of the planning area, and must continue to operate during and following a disaster to reduce the severity of impacts and accelerate recovery. Such facilities include, but are not limited to

- hospitals (primary and alternate locations),
- law enforcement facilities
- fire/rescue stations (especially vehicles),
- correctional facilities (jails, juvenile detention centers, prisons),
- emergency operations centers (911, special disaster centers, and mobile command posts),
- emergency shelters,
- nursing homes (special needs shelters),
- major roads,
- airports/heliports,
- electrical distribution systems,
- water/wastewater treatment /distribution systems, and
- communications towers.

Whenever these facilities are destroyed or damaged to the point that they are not usable, they must be repaired or relocated as soon as practically possible.

# Types of Critical Facilities

Public Safety/Health Related (including Law Enf. Medical)	County designations (CF,O,n/a)				Category	Utility-Infrastructure Related	County designations (CF,O,n/a)			
	Nash	Edgec	Wilson	Halk			Nash	Edgec	Wilson	Halk
Emergency Operations Centers (including mobile command posts)	CF	CF	CF	CF	R	Highways, major	CF	CF	CF	CF
911 Centers (including backup locations)	CF	CF	CF	CF	R	Communications towers (VIPER)	CF (2)	CF (3)	CF (2?)	CF
Hospitals	CF	CF	CF	CF	R	Water/Sewer Treatment Plants	CF	CF	CF	CF
Central Receiving/Distribution Points for Disaster Recovery)	CF	CF	CF	CF	R	Airport/heliports	CF	CF	CF	CF
Shelters (CRES) <sup>1</sup>	CF	CF	CF	CF	R	Cable Systems, gov't (GreenLight only)	n/a	n/a	n/a	n/a
Correctional Facilities (Jails/Juvenile Detention/Prisons)	CF	CF	CF	CF	C/M	Communications towers (cell, radio)	CF	CF	CF	CF
EMS Facilities-Vehicles	CF	CF	CF	CF	C/M	Plants (for water supply waterboodies only)	CF	CF	CF	CF
Fire Stations-Vehicles	CF	CF	CF	CF	C/M	Electric distribution systems (substations, etc)	CF	CF	CF	CF
Forestry Facilities (US &/or NC)	CF	CF	CF	CF	C/M	Leaves (for flood damage protection, in Princeville & Speed only)	CF	CF	CF	CF
Fueling Stations, gov't general	O	CF <sup>2</sup>	O	CF	C/M	Natural Gas distribution systems	n/a	n/a	n/a	n/a
Fueling Stations, NCDOT	CF	CF	CF	CF	C/M	Public Works/Maintenance Facilities (DOT, County, Municipal)	CF	CF	CF	CF
Government Offices/City, Town Halls	CF	CF	CF	CF	C/M	Sewer distribution systems (lift stations)	CF	CF	CF	CF
Health Dents	CF	CF	CF	CF	C/M	Telephone Systems (Rocky Mount hub only)	CF	CF	CF	CF
NC Highway Patrol Offices-Vehicles	CF	CF	CF	CF	C/M	Water distribution systems (pump stations)	CF	CF	CF	CF
Nursing Homes/Assisted Living Facilities (special needs shelters)	CF	CF	CF	CF	C/M	Water Towers/Tanks/Storage Tanks	CF	CF	CF	CF
Police Stations-Vehicles	CF	CF	CF	CF	C/M	Wells (public water supply wells only)	CF	CF	CF	CF
Shelters (permanent, emergency) <sup>3</sup>	CF	CF	CF	CF	C/M		CF	CF	CF	CF
Sheriff's Offices-Vehicles	CF	CF	CF	CF	C/M		CF	CF	CF	CF
Urgent Care Facilities	O	n/a	O	CF	C/M,O		CF	CF	CF	CF

Notes: CF=critical facility, O=other, R=regional, C/M=county/municipal  
<sup>1</sup> CRES (Coastal Region Evacuation and Sheltering)  
<sup>2</sup> County School Bus Facility  
<sup>3</sup> Actual shelter locations in most cases will not be determined until an emergency situation is eminent/occurring

# **Citizen Questionnaire**

- Ranking of Hazards
- Family/Household Preparedness
- Possible Activities to Increase Preparedness
- Comments/Questions
- County Where You Live

# For More Information Contact:

- Wyatt McGhee, AICP/CFM
- Upper Coastal Plain COG
- 252-234-5968
- [wmcghee@ucpcog.org](mailto:wmcghee@ucpcog.org)
- <http://www.ucpcog.org/>



P.O. Box 9 • Wilson, NC 27894  
252.234.5952 (Tel) 252.234.5971 (Fax)

**Regional Hazard Mitigation Plan  
(Nash, Edgecombe & Wilson Counties)  
Public Input Meeting: November 20, 2014**

Hazard Mitigation Questionnaire for Public Input:

1. The following 11 hazards have been identified as having a greater potential than other natural hazards to impact our region over the next five years. Please rank these hazards from 1 to 12 (with 1 being of greatest concern to you and your family and 12 being of least concern). Please write (in the spaces provided below) any other hazards you are concerned about that are not listed:

- Dam/Levee Failures
- Drought/Heat Waves
- Earthquakes
- Floods
- Fog
- Geological (acidic soil, subsidence, sinkholes, expansive soil, & geochemical)
- Hurricanes and Extratropical Storms (Nor'easters)
- Severe Winter Weather (freezing rain, sleet, snow, extreme cold, strong wind)
- Thunderstorms (including hail, lightning, & strong wind)
- Tornadoes
- Wildfires/Forest Fires
- other hazard (list: \_\_\_\_\_)
- other hazard (list: \_\_\_\_\_)
- other hazard (list: \_\_\_\_\_)

2. In your opinion, how prepared is your family for disasters like those listed above and the impacts that can result (such as flooding, road closures, extended power outages, need to boil water, building damages, etc). (circle one)

Very Prepared                      Moderately Prepared                      Poorly Prepared

3. Which of the following activities do you think will most increase your ability to prepare for and respond to disasters:  
(please rank with 1 being highest and 4 being lowest):

- Community meetings to discuss preparedness,
- Written educational materials and preparedness guidance materials,
- Instructions on where to get information during a disaster,
- other activity(s) (list: \_\_\_\_\_  
\_\_\_\_\_)

4. Provide any comments/other concerns here: \_\_\_\_\_

\_\_\_\_\_  
\_\_\_\_\_  
\_\_\_\_\_

5. Questions: \_\_\_\_\_

\_\_\_\_\_  
\_\_\_\_\_  
\_\_\_\_\_

County where you live (circle one):    Edgecombe,    Nash,    Wilson

Name (optional): \_\_\_\_\_

Address (optional): \_\_\_\_\_

Would you like to be contacted? Yes or No (circle one)

If so, provide your email address: \_\_\_\_\_

and/or phone number: \_\_\_\_\_